

Stock Number: TU527315

Model: 210G LC Serial Number: 1FF210GXPKF527315



### EVAL INSPECTION — QUICK — EXCAVATORS

2019 John Deere 210G LC  
Stock: TU527315  
Serial: 1FF210GXPKF527315  
Warranty Unknown

STORAGE LOCATION  
**Doggett Heavy Machinery Services / 177166**  
Houston, TX, 77037  
Contact:

### PHOTOS (14 Total)



### SUMMARY

**Overall Condition:** GOOD

**Overall Comments:** Unit has scrapes all over paint where it was used in land clearing. The hydraulic thumb has severe pin and bushing play at thumb pin. The thumb is missing the 2 tips of the middle tines. The seat has a cover where the original seat cushion cover has wear on the material. This unit does operate great and everything works as intended. A/C works well and blows cold. Good unit all around, ready to work.

**Evaluator's Name:** Albert Moreno  
**Operated Machine:** Yes  
**Hours:** 3,024

	E X C	G O O D	A V G	F A I R	P O O R	N / A	Comments	Estimated Cost		
								Parts	Labour	Total
General Appearance			X				Unit has damaged panel door on each side. slight rust spots			
Instruments / Controls		X					every thing working well			
Cooling System Checks		X					No overheating issues while running			
Engine Checks		X					Engine sounds good no codes or issues			
Transmission Checks						X				
Differential, Brakes and Final Drive Checks		X					work well no issues, unit runs on low and high			
Hydraulic System Checks		X					No issues noted on the hydraulic system			
Chassis and Frame Checks		X					good no welds nor cracks			
Ground Engaging Tools		X					good			
Undercarriage		X					good			
Undercarriage Measurements										

Stock Number: TU527315

Model: 210GSL Serial Number: 1FF210GXPKF527315

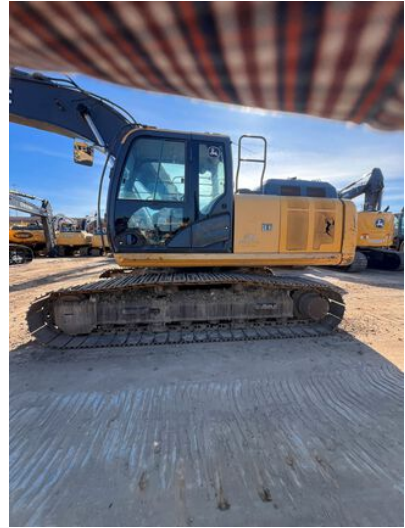
**GROUND ENGAGING TOOLS**

	% remaining	NEW	GOOD	USABLE	REPAIR	REPLACE	N/A	Comments	Estimated Cost		
									Parts	Labour	Total
Buckets	70%		X								
Blades											
Teeth / Tips	50%			X							
End Bits											
Cutting Edge											

**UNDERCARRIAGE MEASUREMENTS**

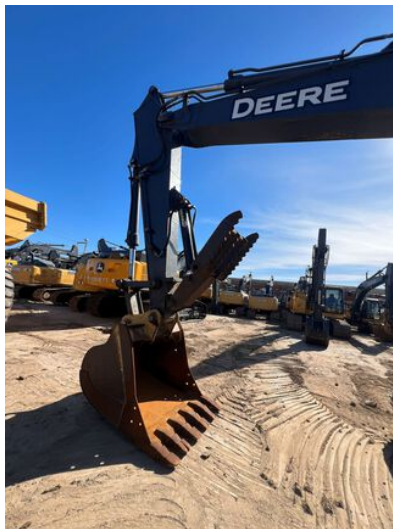
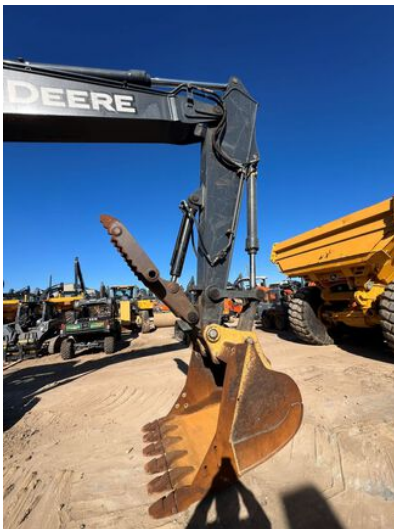
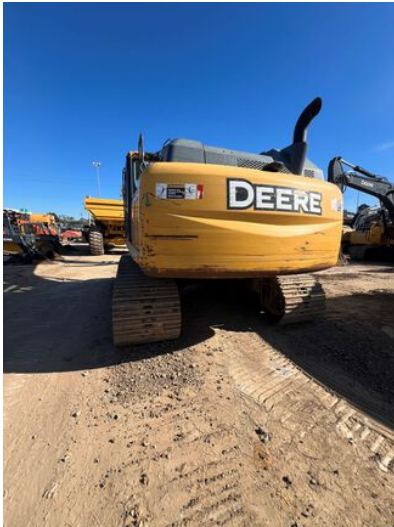
	Dimension	% remaining	Comments	Estimated Cost		
				Parts	Labour	Total
Track Links		80%				
Track Bushings Chain sealed and lubricated? <input type="radio"/> Yes <input checked="" type="radio"/> No Have pins/bushings been turned? <input type="radio"/> Yes <input checked="" type="radio"/> No		80%				
Track Pitch		50%				
Grousers - Shoes		60%				
Idlers		60%				
Carrier Rollers		60%				
Track Rollers		60%				
Sprockets		70%				

**ADDITIONAL PHOTOS**



Stock Number: TU527315

Model: 210G Serial Number: 1FF210GXPKF527315



Stock Number: TU527315

Model: 210G Serial Number: 1FF210GXPKF527315

